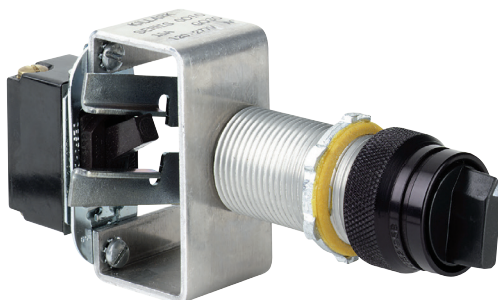




**KILLARK®**

## INSTALLATION, OPERATION & MAINTENANCE DATA SHEET

**GO10-N34 2 POSITION SNAP SWITCH OPERATORS WITH MAINTAINED CONTACT. FOR CLASS I, GROUPS B, C & D, CLASS II, GROUPS E, F & G, & CLASS III HAZARDOUS LOCATIONS AND TYPE 3, 3R, 3S, 4 AND 4X ENCLOSURES**



# GO10-N34 2 POSITION SNAP SWITCH OPERATORS WITH MAINTAINED CONTACT

### CAUTION:

Before installing, make sure you are compliant with area classifications, failure to do so may result in bodily injury, death and property damage. Do not attempt installation until you are familiar with the following procedures. All installation must comply with the applicable Electrical Code.

Make sure that the circuit is de-energized before starting installation or maintenance.

Verify that the installation is grounded. Failure to ground will create electrical shock hazards, which can cause serious injury and or death.

### IMPORTANT:

Please read these instructions carefully before installing or maintaining this equipment. Good electrical practices should be followed at all times and this data should be used as a guide only.

Technical information, advice and recommendations contained in these documents is based upon information that Killark believes to be reliable. All the information and advice contained in these documents is intended for use only by persons having been trained and possessing the requisite skill and know-how and to be used by such persons only at their own discretion and risk. The nature of these instructions is informative only and does not cover all of the details, variations or combinations in which this equipment may be used, its storage, delivery, installation, check out, safe operation and maintenance. Since conditions of use of the product are outside of the care, custody and control of Killark, the purchaser should determine the suitability of the product for his intended use, and assumes all risk and liability whatsoever in connection therewith.



3940 Dr. Martin Luther King Drive  
St. Louis, MO 63113

P/N 00911741 FORM NO. K1082 R07/13 ECO-3-028-13

Page 1 of 3

These snap switch operators are designed for enclosures which meet the requirements of Article 500 of the National Electric Code. GO10 devices are to be mounted in enclosures with walls up to 1-1/2" thick. For use on a flat surface of a type 3, 3R, 3S, 4, and/or 4X enclosure.

## 1. DIRECTIONS FOR INSTALLATION

**CAUTION:** Be sure to turn **OFF** the supplying circuit before beginning installation.

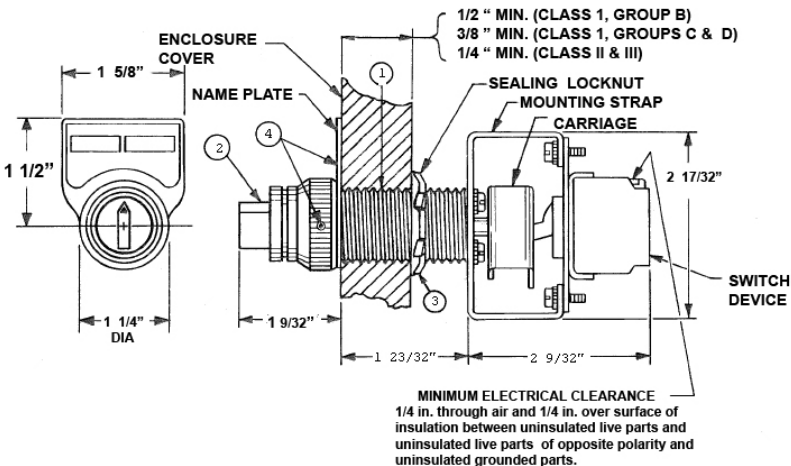
- Using the installation drawing on left as a guide, drill and tap a 3/4-14 NPSM-2B hole on a flat portion of a type 3, 3R, 3S, 4, and/or 4X enclosure. The hole must be located so that a flat area is available to tighten the sealing locknut in the inside of the cover and enough room is allowed for mounting the nameplate on the outside. In addition, the inside cover surface must be perpendicular to the threaded hole. For Group B locations, a minimum of 7 full threads engagement is required and for Groups C & D locations, a minimum of 5 full threads is required. For proper electrical clearance, these devices should be mounted on 2-1/2" centers and 1-3/4" from any vertical wall.

**NOTE:** If this operator is installed in an enclosure with walls more than 2-1/2" thick, the wall must be counter bored to ease installation of the sealing locknut on the operator body. The counter bore should be 2-1/2" in diameter to clear the mounting strap

**IMPORTANT:** Do not counter bore any deeper that necessary. The minimum wall thickness shown below must be maintained for the particular hazardous location of your installation.

- Remove the cap and thread the remainder of the assembly through the hole from the inside until the threaded body protrudes approximately 1/4" on the face of the cover.

## INSTALLATION DRAWINGS



**KILLARK**

**Chalmit**

**Victor**  
Lighting

**Vantage**  
Technology

**RIG POWER**

**HAWKE**  
International

3940 Dr. Martin Luther King Drive  
 St. Louis, MO 63113

P/N 00911741 FORM NO. K1082 R07/13 ECO-3-028-13

Page 2 of 3

3. Orient the assembly as desired and tighten the sealing locknut to secure it. (The assembly may be staked in place if desired).
4. Position the nameplate on the cover and install the cap to hold it. Secure the cap with the set screw.
5. Wire the system, secure the enclosure and turn **ON** the circuit to test the system.

**NOTE:** All installations must comply with applicable local and/or National Electrical Code.

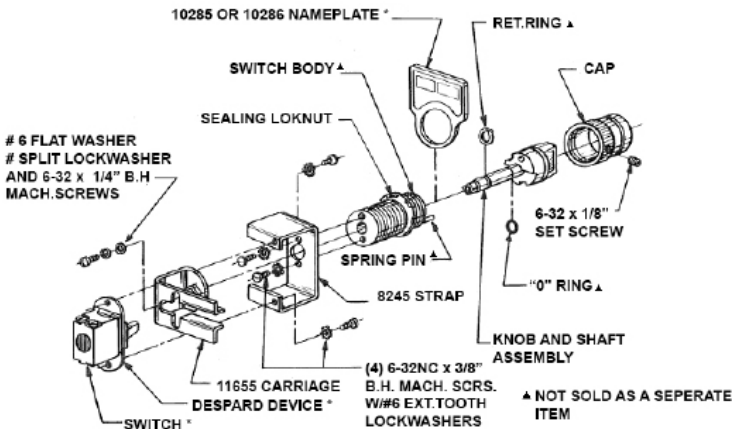
## 2. OPERATIONAL DATA

The snap switches used on these operators are electrical arcing devices. Therefore, the enclosure in which they are installed must be provided with external seals, as required by NEC articles, 501-2 & 502-5. In addition, the enclosure must be marked with a cautionary statement such as "Caution: Disconnect this device from the supplying circuit before entering. Keep assembly tight while circuits are alive." This statement must be permanently visible after the enclosure has been installed.

## 3. MAINTENANCE DATA

"GO" Series Snap Switches should be periodically checked for damage and for proper operation. The selector switch shaft should be lubricated occasionally to prevent binding. Damaged or worn parts should be replaced promptly to maintain safe operation. Refer to the Parts Drawing and to the Killark catalog for specific replacement parts and part.

## PARTS DRAWING



Parts will vary between different operator configuration

REMEMBER TO SAVE ONE OF THESE SHEETS FOR THE MAINTENANCE PERSONNEL



3940 Dr. Martin Luther King Drive  
St. Louis, MO 63113

P/N 00911741 FORM NO. K1082 R07/13 ECO-3-028-13

Page 3 of 3